

Where  
*Happiness*  
Resides



SUNVIEW



Kids  
Play Area



Party  
Lawn Area



Zumba/Aerobics  
Area

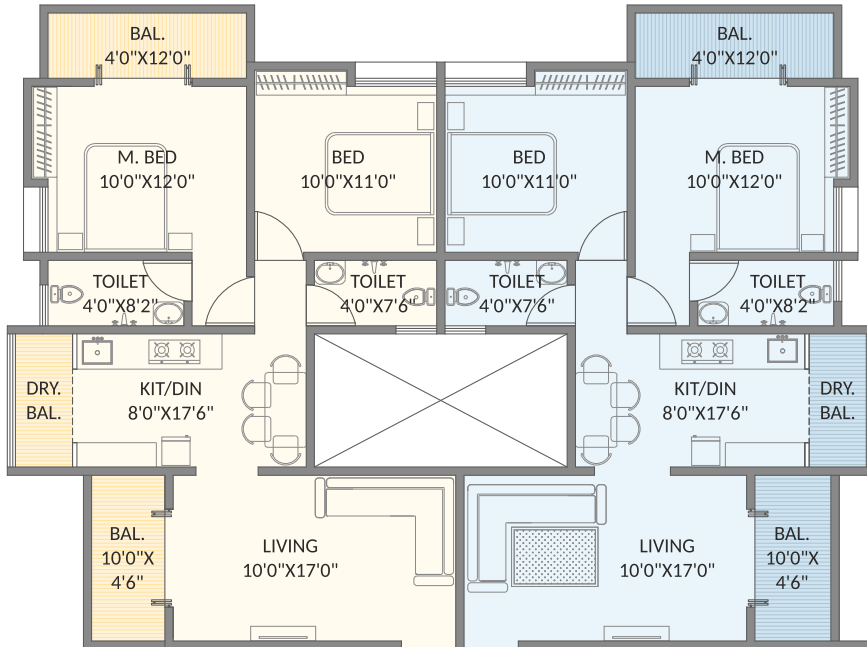


Garden  
Sit-Out

1.5, 2, 2.5 & 3 BHK HAPPY HOMES

A PROJECT BY - SAMRUDDHEE CONSTRUCTIONS

101  
201  
301  
401  
501  
601  
701



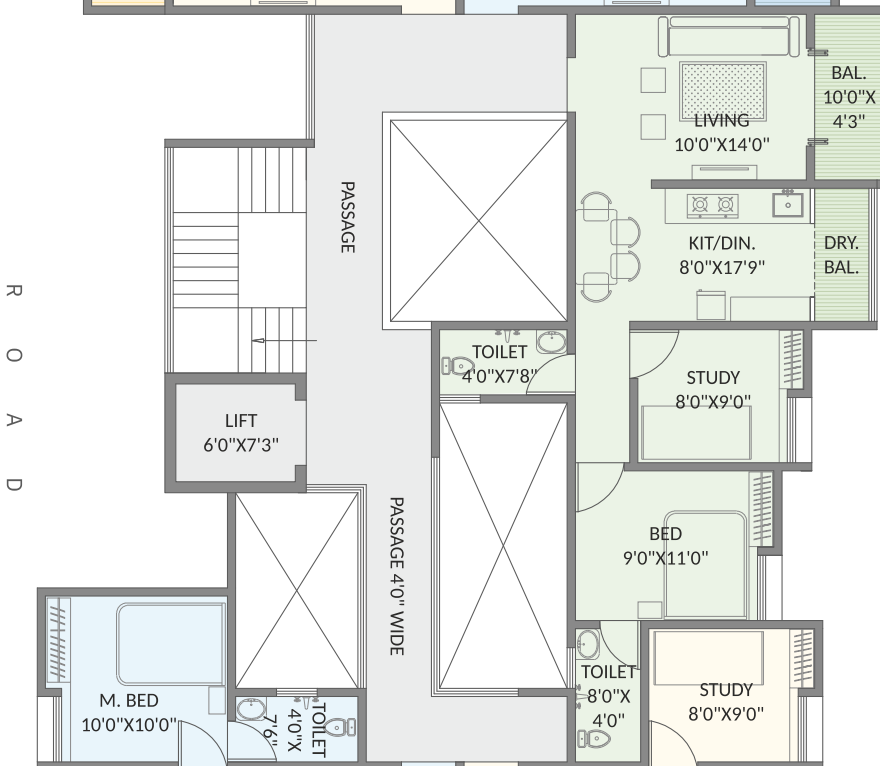
**2 BHK**

Carpet Area : 626.45 sq.ft.  
Balc. Area : 144.50 sq.ft.  
Total Area : 771 sq.ft.

102  
202  
302  
402  
502  
602  
702

**2 BHK**

Carpet Area : 626.45 sq.ft.  
Balc. Area : 144.50 sq.ft.  
Total Area : 771 sq.ft.



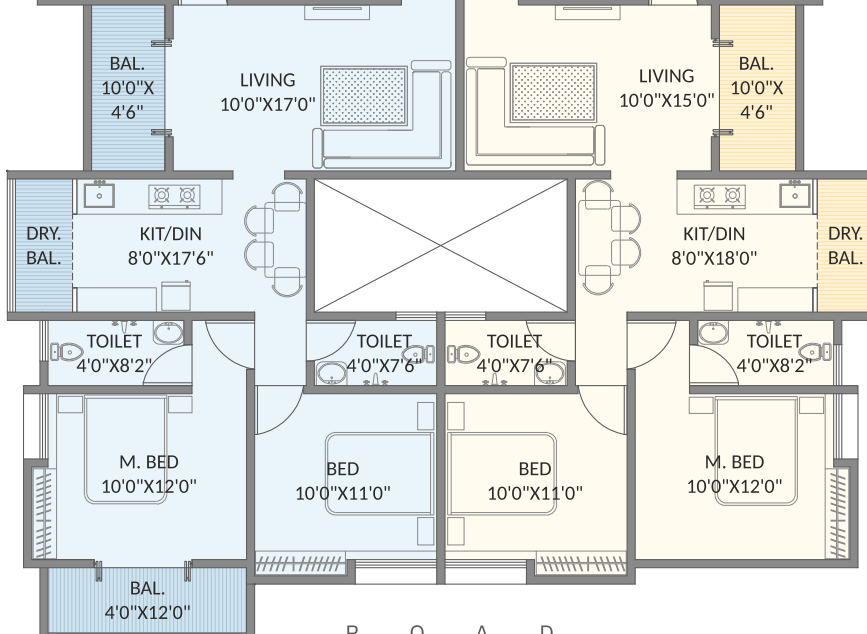
103  
203  
303  
403  
503  
603  
703

**2 BHK**

Carpet Area : 536.28 sq.ft.  
Balc. Area : 84.46 sq.ft.  
Total Area : 621 sq.ft.

**3 BHK**

Carpet Area : 763.74 sq.ft.  
Balc. Area : 142.03 sq.ft.  
Total Area : 906 sq.ft.



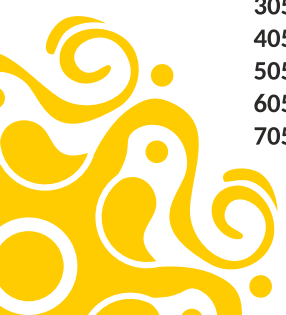
105  
205  
305  
405  
505  
605  
705

**2.5 BHK**

Carpet Area : 684.44 sq.ft.  
Balc. Area : 86.40 sq.ft.  
Total Area : 771 sq.ft.

104  
204  
304  
404  
504  
604  
704

R O A D



# Amenities



# Specifications

## Structure:

- Earthquake resistant IS code complied RCC structure.

## Brick work:

- 6" thick Red brick masonry for external and internal walls. Lintel free brickwork for all windows and doors.

## Plaster:

- Internal: Sand finish plaster in flat along with gypsum finish for smooth feel. Gypsum finish on bottom surface of all slab area.
- External: Sand finish plaster in all external sides including ducts.

## Flooring:

- 600x600 mm vitrified tile flooring in all the rooms (Asian/Kajaria or equivalent).
- Anti-skid ceramic tiles for toilet, balconies, and terraces.

## Kitchen:

- Granite kitchen platform with SS sink.
- Branded ceramic wall tiles up to ceiling level.
- Provision for drinking and domestic water, aqua guard and water purifier.
- Provision for refrigerator, mixer, oven & exhaust fan.

## Toilet:

- Branded ceramic wall tiles up to ceiling.
- Branded CP fittings and sanitary ware (Jaguar/Hindware/Parryware or equivalent).
- Diverter mixer unit with overhead shower.
- Provision for geyser, exhaust fan and solar water.

## Windows:

- Standard sized windows for better air circulation and ventilation.
- Powder coated 3 track aluminum sliding windows with mosquito mesh with MS Grills for safety and security.
- Granite window sill.

## Doors:

- Branded main entrance door with wooden laminated frames and prime quality fittings.
- Standard laminated doors for bedrooms with plywood laminated frames.
- Laminated flush doors with FRP coating for bath and WC with granite door frames.
- Full opening MS powder coated french doors for terraces.

## Electrification:

- Well designed electrical layout of flats with maximum provision of electrical points designed by consultant.
- Concealed fire resistant high quality copper wiring.
- Ample light points with branded modular switches.
- TV and Internet points in living.
- Provision for washing machine in dry terrace.
- AC point in master bedroom.

## Lift:

- Lift with generator back up (Otis/Schinder or equivalent)

## Parking:

- Adequate parking space.





# SUNVIEW



## Location



## Site Address :

Plot No. 21 & 22, Vastu Udyog,  
Antariksha Society Road,  
Pimpri, Pune - 411018.



## Office Address :

4/B, Lalkar Housing Society,  
Manik Colony, Chinchwad,  
Pune - 411033.

## Call for Booking :

**90220 03205**

**98600 09990**

samruddhigroup18@gmail.com



MAHARERA REG. NO.  
**P52100050177**  
available at  
www.maharera.mahaonline.gov.in